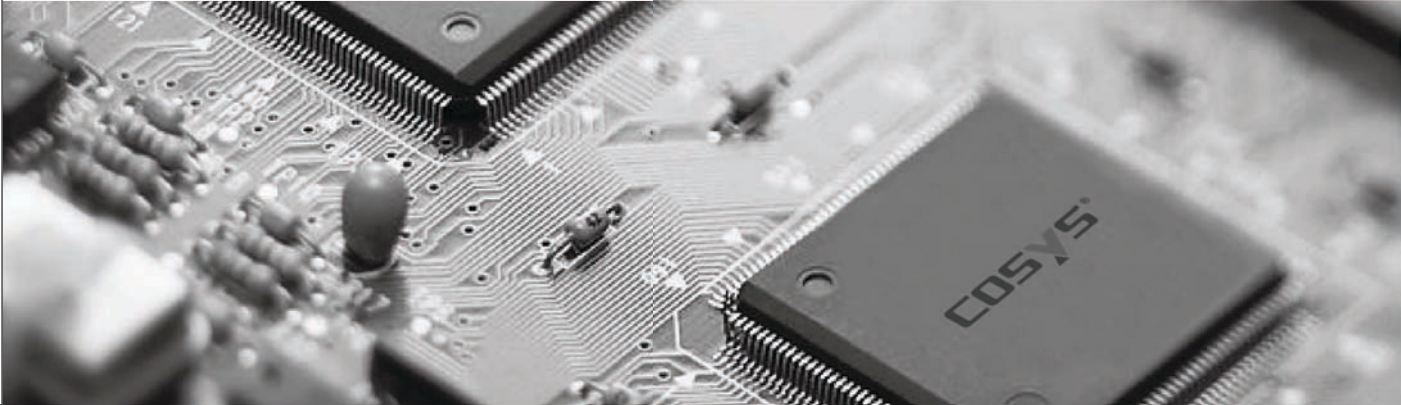


EPR100 Series Intelligent Positioner

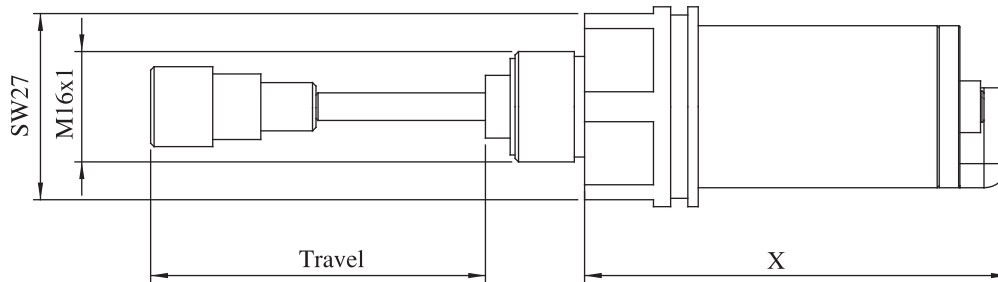


Intelligent Positioner



COSYS[®]
Excellence In Control

■ EPR100S Matching travel sensor



Model	Travel Stroke	X
EPR-C4-S001-xxxx	30	62.2
EPR-C4-S002-xxxx	50	84.2
EPR-C4-S003-xxxx	75	109.2
EPR-C4-S005-xxxx	30	62.2

“XXXX” means cable length. Length unit is mm, Max. cable length is 5000mm, default is 500mm.

Example: EPR-C4-S001-0500, 500mm cable sensor. For actuator top mounting, default length is 500mm.

■ Electric connector



4Pin straight connector

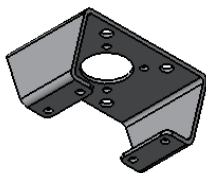


5Pole straight connector

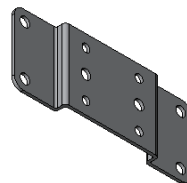


5Pole 90° connector

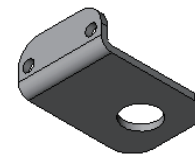
■ Mounting bracket



L x H mounting bracket



Remote mounting bracket

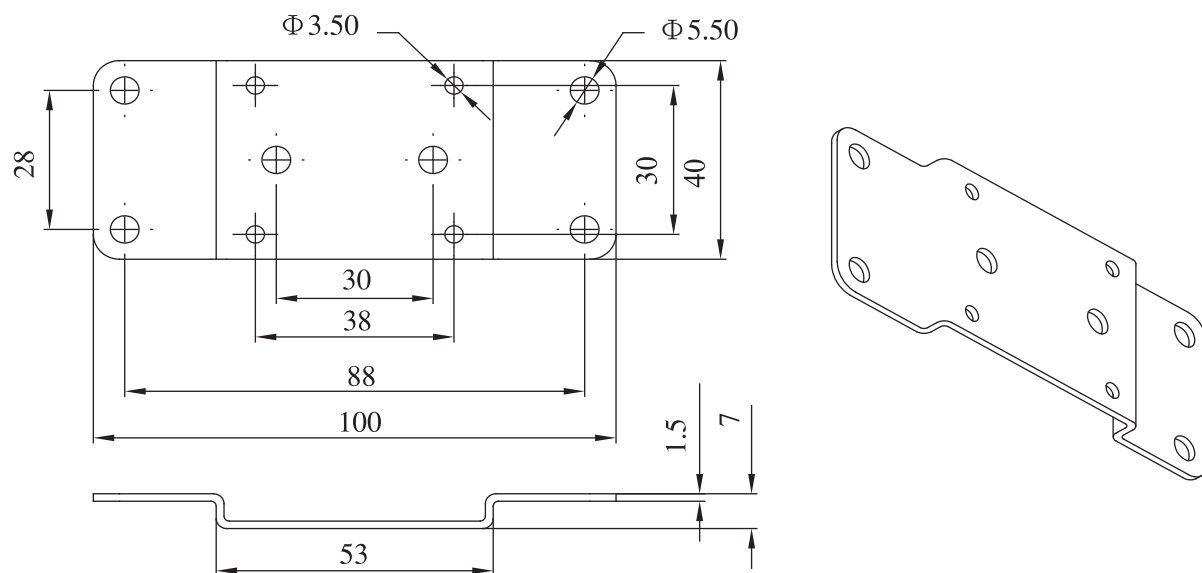


Actuator top mounting bracket

■ Accessory

Description	Order Code	EPR100S	EPR100P
Actuator top mounting bracket	3000300004	X	N/A
Remote mounting bracket	3000100008	X	N/A
L80 x H55 mounting bracket	3000400015	N/A	X
L130 x H75 mounting bracket	3000400016	N/A	X
5Pole straight connector	3100000011	X	N/A
5Pole 90° connector	3100000008	X	N/A
4Pin straight connector	3100000013	X	N/A

■ Remote mounting bracket



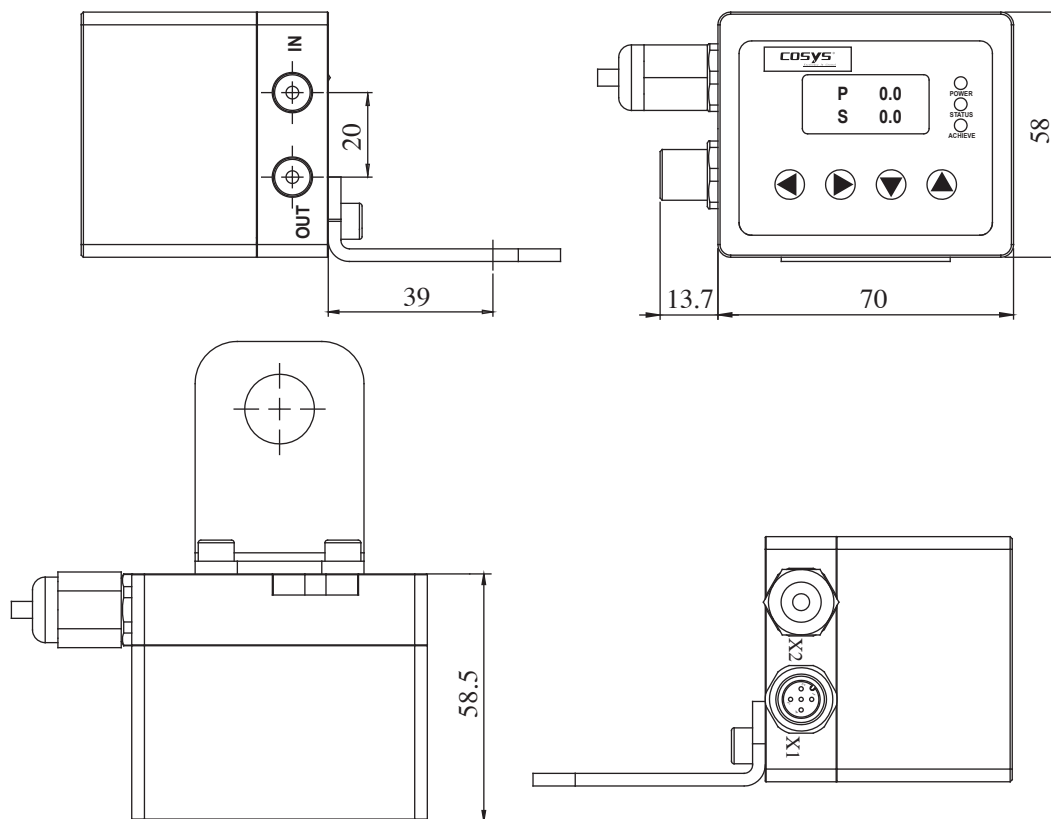
General Technical Data

Model	EPR100S	EPR100P
Power Supply	24VDC±10%, <6W	
Electric Connect	M12A code round plug connector	Grommet
Sensor Connect	M12A code round plug connector or Grommet	N/A
BUS Connect	N/A	D-SUB9
Protection Standard for EN60529	IP65	IP65 (For D-SUB9 IP20)
Command Signal	0/4...20mA	0/4...20mA or BUS
Monitor Signal	4...20mA	4...20mA or BUS
LED Indicator	Power, Bus, Fault and Achieve indicator	
LCD Display	Command signal and real position and settings	
Enclosure	Aluminum	
Ambient temperature	0...50°C	
Weight	≈0.5Kg	≈1Kg

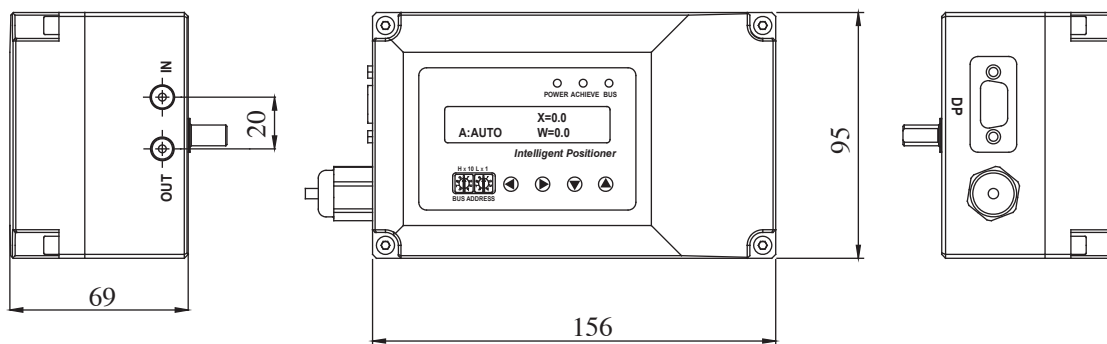
Positioner Technical Data

Model	EPR100S	EPR100P
Cv	0.1	
Max. Input Pressure	120psi	
Fluid	20µm filtered or less dry compress air or inter gas	
Lubrication	No required, if use, a medium aniline point oil is recommended.	
Accuracy	≤±0.3%	
Control Line	Linear, R25,R30,R40,R50,free (Q open)	
Sensor Stroke	0...30/50/75	0...120°
Sensor Resistance	3K...5K	
PID parameter	Adjustable	
Control function	Single actuator	

EPR100S Dimensions(mm)



EPR100P Dimensions(mm)

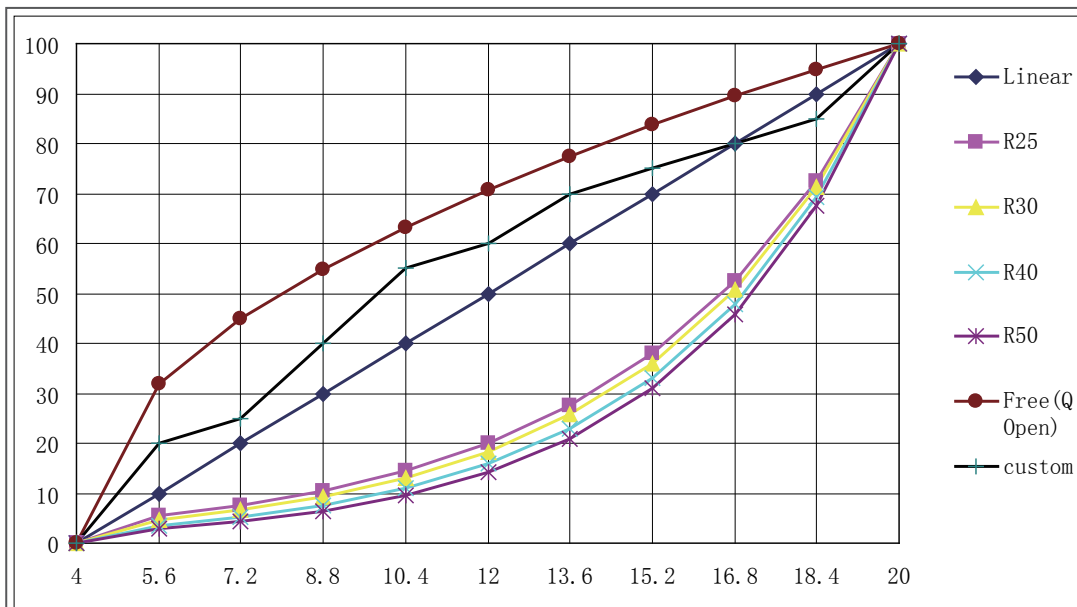


Control functions

6 functions : Linear, R25, R30, R40, R50, Free(Set the point freely, Q Open is the default line)

①	②	③	④	⑤	⑥
Linear SETP Fun	1: 25 SETP Fun	1: 30 SETP Fun	1: 40 SETP Fun	1: 50 SETP Fun	free SETP Fun

Position/%	Control Signal/mA	Linear	R25	R30	R40	R50	Free(Q open)
0	4	0	0	0	0	0	0
10	5.6	10	5.5	4.7	3.6	3	31.8
20	7.2	20	7.6	6.6	5.2	4.4	44.9
30	8.8	30	10.5	9.2	7.6	6.5	54.9
40	10.4	40	14.5	13	10.9	9.6	63.3
50	12	50	20	18.3	15.8	14.1	70.8
60	13.6	60	27.6	25.7	22.9	20.9	77.5
70	15.2	70	38.1	36	33.1	30.9	83.7
80	16.8	80	52.5	50.6	47.8	45.7	89.5
90	18.4	90	72.5	71.2	69.2	67.6	94.9
100	20	100	100	100	100	100	100



Control Lines

Order number

Bus connecting		Signal output option(NO BUS ONLY)			
NO BUS	000	NO	00		
BUS	DP	4~20mA	01		
Fail Safe type		Switch Output PNP	02		
Keep current position	SA01	4~20mA+Switch Output PNP	03		
Reset current position	SA02	Switch Output NPN	04		
		4~20mA+Switch Output NPN	05		
Electric connector					
Grommet	01	Grommets			
M12 Screw terminal connector	02	M12 A code connectors			
M12 Screw terminal connector+ Grommet	03	1 M12 A code connector + 1 Grommet			
Order example	EPR100S	000	SA1	00	01
Type	EPR100S				
BUS connecting		000			
Fail safe type			SA01		
Output option				01	
Electric connector					02



Cosys Inc.

Add: 4F, Block30, 201 Minyi Road,
Caohejing Hi-Tech Park New
Economic Zone, Shanghai
China 201612

Tel: 86-21-67687155/56/57

Fax: 86-21-67687159

E-mail: sales@cosys-control.com

Http: [//www.cosys-control.com](http://www.cosys-control.com)